





From its inception, 10 years ago, Unit7 has come a long way. Today we are able to support you on all infrastructure and construction projects, carrying our support with a high and consistent quality standard across UAE, KSA, Asia, and Europe. For the last decade we have worked together with our clients as partners in high quality projects spanning a variety of sectors, namely Airports, Mobility, Retail, Hospitality, Commercial and Residential.

We also take great pride in the work we have accomplished in the themed and specialty sector, for being a unique opportunity for us to display the full extent of our expertise in bespoke, creative and technically challenging projects.

Our commitment towards **“Building Excellence”** goes beyond premium quality projects:

We build excellence when going the extra mile to help you achieve your goals;

We build excellence by sharing your commitment and facing your barriers as our own;

We build excellence because we understand that your reputation is our own.

As you will soon find out, the true value of working with Unit7 by your side comes from our deep care for customer service and high quality project management. On top of that you will have by your side a team that has been awarded multiple quality awards, both as a company and individually. Of course, all our business systems are ISO Accredited.

TABLE OF CONTENTS

1

INTRODUCTION, OVERVIEW, FACTS

1.1 About the Group	02
1.2 History & Milestones	04
1.3 Services & Expertise	06
1.4 Mission Vision	08
1.5 Construction Services	09

2

INFRASTRUCTURE

2.1 Metro	12
2.2 Airports	20
2.3 Malls	28

3

LEISURE / CULTURAL SPACES / HOSPITALITY

3.1 Pavilions	32
3.2 Galleries / Museum	42
3.3 Hospitality	48

4

COMPANIES POLICIES, LOCATIONS, CONTACT

4.1 Group Of Companies	56
4.2 Sustainability Policy	58
4.3 Welfare Policy	59
4.4 Corporate Social Responsibility	60
4.5 Contact & Location	62

ABOUT THE GROUP

With humble beginnings and eagerness to maintain our core values and ethics, over the last 10 years Unit7 has endured and triumphed in a unforgiving market. Our persistence and determination to “deliver excellence” has paved way for our organisation to be competing for the worlds largest projects. In doing so we have been rubbing shoulders with the worlds leading companies. Although still considered a young organisation in comparison to our counterparts.

We boast a successful portfolio of high quality projects, with timely delivery and client satisfaction. Over the years we have expanded our horizons, now operating in many countries. Unit7 thrives in innovation, We initiated services through pre-fabrication of interior fitouts, subsequently having a fine eye for detail, working our way through to having, Our network of project management and construction capabilities. Our approach is consistent; we have extensive design and construction expertise. We are able to procure and deploy resources in terms of excellent manpower and materials. All in parallel with safety, security and sustainable measures. These attributes are the key components for the large scale yet intricate projects that we operate on.

We work in unison with our clients for timely delivery. Having in-depth understanding of customer needs and technical know of project management and value engineering. Utilising our in-house network of HR, coupled with our extensive local and international supply. We offer a complete infrastructure, construction, interior fitout, MEP solution. Offering the highest standards of quality and workmanship. Unit7 has grown to become a key player in the Middle-East construction industry through its commitment to reliability, in-house capabilities and customer commitment. Unit7 has delivered various projects with exemplary safety records, adhering to strict global health and safety regulations.

key figures

6+

Countries Presence

170+

Our Team Size

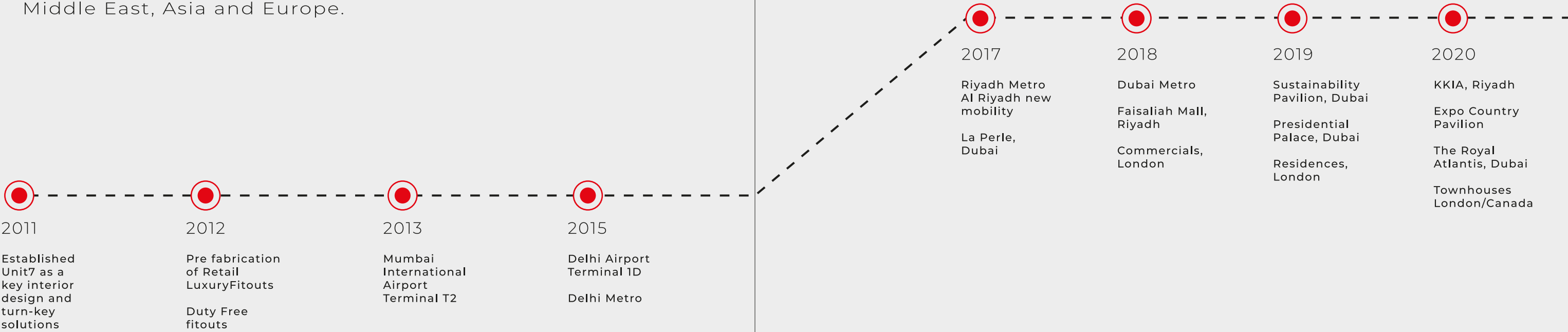
45+

Projects completed till date



HISTORY & MILESTONES

With active presence in 6 countries, the company is committed to contributing to the economic & social development of the communities in which it operates. Over the years we have expanded our horizons panning the Middle East, Asia and Europe.



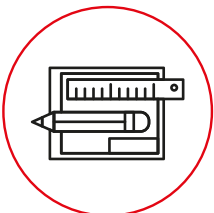
SEVICES & EXPERTISE

Bespoke interior fit out luxury is by far the most demanding specialty we undertook this far. The lessons learned from delivering incredibly detailed projects has made us highly proficient in many core skills that we carry over to all our business units, from infrastructure and transportation to construction and MEP.



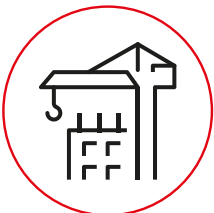
Project Management = Problem Solving

From minor tasks to a broad overview of your project, our Project Management team will help you achieve the best possible solution for a flexible and fail proof schedule. Every build has hurdles, we will help you establish what should, could and will be done at any point in time, helping you solve problems, instead of just pointing them out.



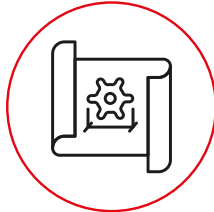
Integrated Design Processes = Return On Investment

All tasks in your project will be subject to our IDP workflow. What this means is that through transparent communication and an holistic approach to the building's life cycle, together we will arrive at unique design solutions that are cost effective in both the short and long run.



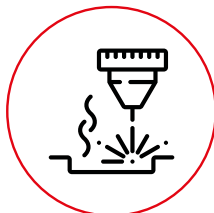
Site Management = Productivity

Initiation, Planning, Execution, Monitoring and Performance, Quality Assurance and Closure. These are the steps our Site Management team will follow to ensure your project runs smoothly and we are very serious about productivity, efficiency, quality, health and safety. We live and breathe construction so don't be surprised if you find a member of our Higher Management team roaming the job site and keeping an eye out.



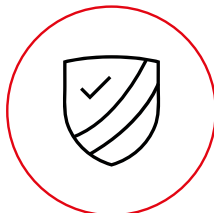
Fit out and MEP = Planning Ahead

Time and time again we hear about how the final stages of a build are behind schedule. We have learned why the hard way, but learned nonetheless. What we learned was that construction stage delays accrue and become noticeable at fit out and MEP stages, which is made worse when procurement and material schedules are lax. For that reason, it will come as no surprise that we carry later stages planning side by side with construction planning from the first day, to keep things neat and in sync.



Live Mockups = Predictability

Visualizing the end result of your investments can be hard, and making a choice of materials without seeing them in place is a risk. Our fabrication facilities are a great resource for providing you with a tangible vision of what the final product will look like, through the creation of real size mockups.



Ethics = Leadership

Working across different countries and cultures has brought our ethical standards to an International level. Your ethical standards and values are something we respect and care about, holding ourselves accountable for matching them. Some values are universal, namely honesty, integrity, punctuality, loyalty, fairness, mutual respect and empathy. Coincidentally these are also the values we look for when electing our Leadership roles who are keepers of our commitment towards **“Building Excellence”**.

MISSION & VISION

Our path towards becoming the world's number one company in the luxury, culture and experience segments within our industry is paved with the girth that comes from walking side by side with companies with whom we have built, are building and will build lasting relationships. Together we are moved by trust, commitment and transparency, carrying the responsibility of contributing to the economic and social development of local communities.

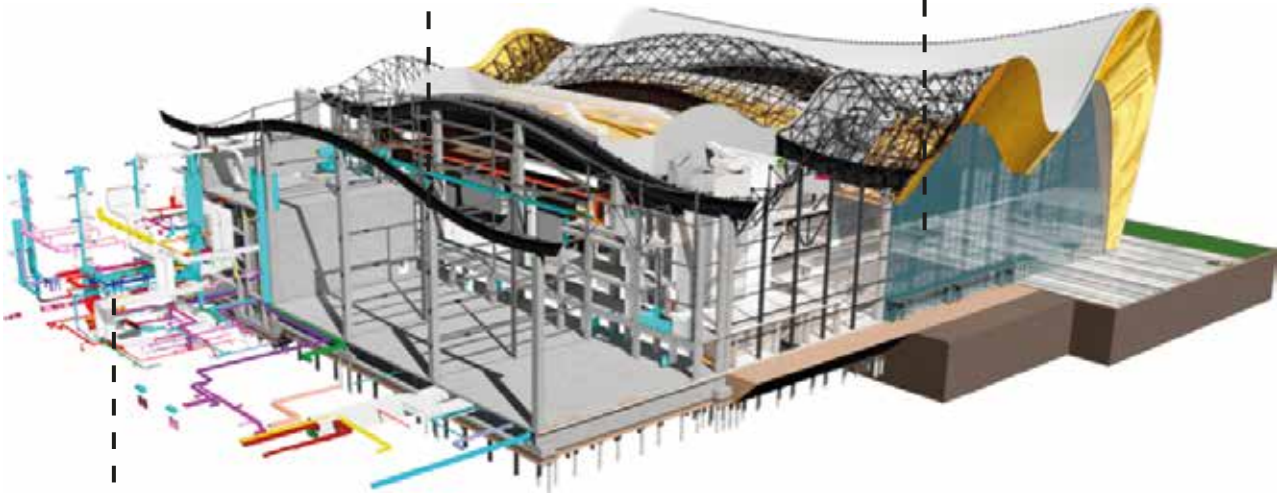
CONSTRUCTION SERVICES

Structures

Our engineers with skills and expertise use engineering to ensure that there structures are used for the betterment with respect to constructability, performance, and maintenance of buildings. Our Structural engineers combine the core principles of structural design with a sound background in physics and materials science to ensure that structures are built to hold the loads and forces that they will encounter during their usage.

Architecture

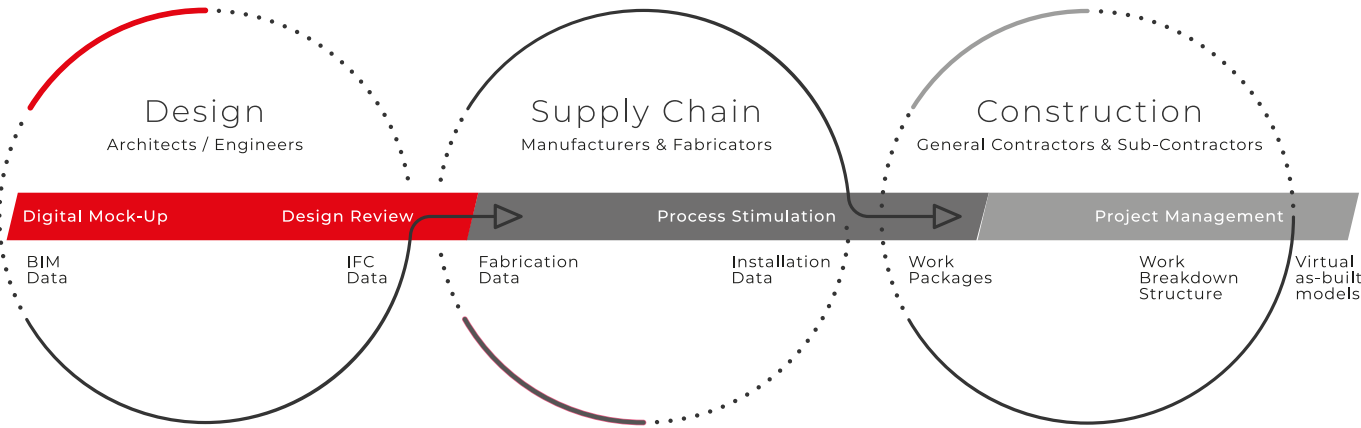
Architects in our organisation ensure that throughout the design process they are constantly thinking of ways to improve quality and accelerate design processes with integrated workflows for concept design, modeling, coordination, and construction documentation.

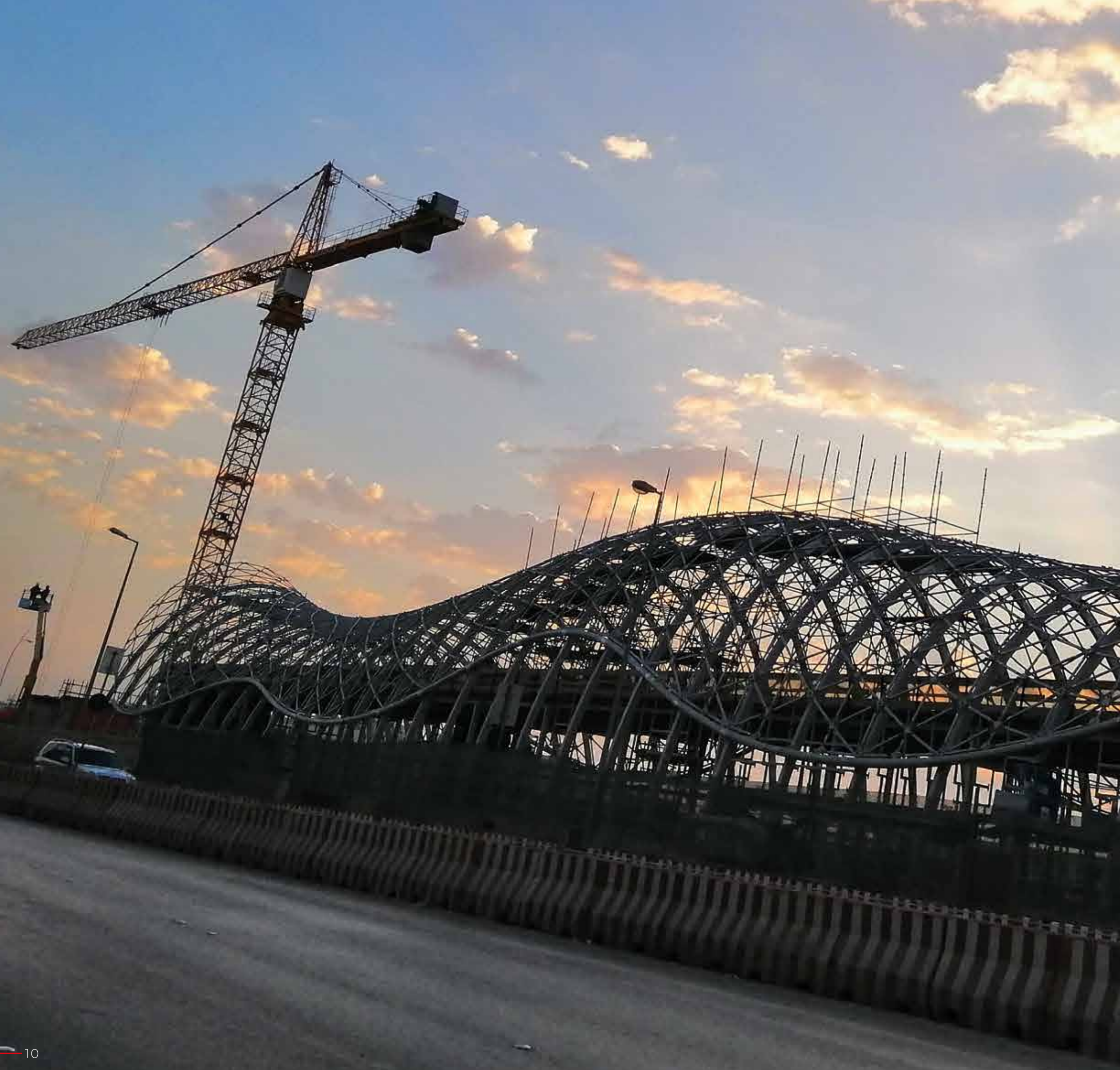


MEP

Mechanical, Electrical and Plumbing, are the core of any building, and it is important they are developed with pure accuracy and perfection. Our MEP division provide sustainable solutions for projects across industries such as Resindential, commercial and many others. As MEP Is always the foundation and implemented during the early stages of a project.

THE PROCESS





OUR PROJECTS

INFRASTRUCTURE

Metro
Airports
Malls & Retail

LEISURE / CULTURAL SPACES / HOSPITALITY

Pavilions
Museum
Galleries
Hospitality



INFRASTRUCTURE PROJECTS



METRO

Riyadh Metro

Dubai Metro

Delhi & Lucknow Metro



Metro

KING ABDUL AZIZ PROJECT FOR PUBLIC TRANSPORT
RIYADH METRO PROJECT - LINE 3

Description

ArRiyadh New Mobility Consortium (ANM) was selected to deliver the 41.8Km Line 3 of the Riyadh Metro which will form part of the six-line mega project that will run for a total length of 176Km across the city. ANM is led by Italian construction group Salini Impregilo and includes partners Larsen&Toubro (India), Nesma (Saudi Arabia), Ansaldo STS (Italy), Bombardier (Canada), Idom (Spain) and WorleyParsons (Australia).

The new Line 3 is the longest section of the gigantic project of the new metro network of the capital city of the Kingdom of Saudi Arabia.

Line 3 is composed of 22 stations (including the iconic Downtown Station and Western Station), 2 depots, and 6 park & ride.

UNDERGROUND STATIONS

There are 8 underground stations: 3E1-2-3-4-5-6 – 3F1 and 3F2.

A typical underground station comprises 4 levels, which are, starting from ground level and going downwards: Grade Level, Technical Level, Concourse Level and Platform Level (rail)

SHALLOW UNDERGROUND STATIONS

These will be built within the road underpasses. There are 5 shallow underground stations.

A typical underground station comprises 3 levels, which are, starting from ground level and going downwards: Grade level, Platform Level and Service Level

PARK & RIDE (No. 6)

These will have a capacity of 600 vehicles. All structures will be built using precast concrete elements; the square shaped pillars and floor will maximize the number of parking spaces. The structures will be faced with modular panels in translucent glass, while the surfaces to the sides of the entrances will be faced in granite.

WEST DEPOT

East and West Depot are used to perform internal cleaning, inspections, maintenance, repairs and painting of the trains.

The structures made of structural steel and concrete mix."

Employer

Arriyadh Development Authority

Design Consultant

IDOM

Area:

Deep Underground
Stations 150,000 m²

Park & Rides -
20,000 m²

West Depot & Shallow
Underground
10,000 m²

Main Contractor

Civil Work Groups - ANM

Location

Riyadh, KSA

Eng Consultant

RMTC







Metro

EXPO 2020 METRO STATION



Unit7 helped develop the interior Fit-out work by using a vast array of elements such as: Multiple glass elements and metal ceiling works to name a few, this was implemented on all 7 stations which had different design and components. The project's scope of work consists of a metro station located at Expo 2020, Dubai. The main Expo Station is inspired by the wings of an aeroplane located at the Expo site will be a landmark and will dominate the skyline with its arches. The length of the station will be double the size of the Metro trains which are 87 metres long, the platforms will be wider and the accessibility to the trains will be better. The Expo station will be the biggest on the entire Dubai Metro network, accommodating 23,000 passengers per hour per direction.

Employer
RTA

Design Consultant
Parsons International Ltd. (Abu Dhabi)

Main Contractor
Gulermak Heavy Industries
Construction & Contracting Company

Location
Dubai, UAE



Metro

DELHI & LUCKNOW METRO



The Tunnel is Designed & Constructed by shield TBM. The station and ramp are built by cut and cover method between Lajpat Nagar and Hazrat Nizamuddin Station (both including) for Mukandpur Yamuna vihar Corridor of Delhi MRTS project of Phase-III L&T-SUCGJV/CC-05/0732 with Zenith and Unit7. Structural Concrete Works at ITO Station L&T-SUCGJV/CC-27/403 Design & Construction of Tunnel, Reinforcement, Shuttering and Concreting work Roof Slab, Concourse Slab, Base Slab and Cutting Cover at RK Puram Station.

Employer
Delhi Metro Rail Corporation

Main Contractor
Larsen & Toubro

Location
Delhi & Lucknow



INFRASTRUCTURE PROJECTS



AITPORT

Riyadh Airport
Mumbai Airport
New Delhi Airport
Hyderabad Airport



Riyadh Airport
KKIA T1 & TL1 REFURBISHMENT



Full interior refurbishment works of existing Terminals 1 of King Khaled International Airport, Riyadh and 2 FOH areas, including a new metro hall to optimize the passenger's experience. Works to be completed before the start of the G20 summit without interruption of operation.

Employer
GACA

Design Consultant
DAR

Eng Consultant
DAR

Main Contractor
Al Bawani Co Ltd

Location
Riyadh, KSA

Area:
10,000 m²



Riyadh Airport
KKIA DEVELOPMENT EXPANSION PROGRAM
(TERMINAL 3 & 4)



King Khaled International Airport -
Main scope of the contract consists of converting Terminal 3 from a Domestic Terminal to an International Terminal. Project also includes stripping of all existing finishes and E/M installations in Terminal 3 and complete fit-out of Terminal 3 and Terminal 4 with a full MEP works, IT works, safety and security systems replacement to provide fully operational terminals. When the project is completed, total passenger capacity will be approx. 12 million per year. Project designer is Dar Al-Handasah.

Employer
GACA

Design Consultant
DAR

Eng Consultant
AECOM

Main Contractor
JV-RTCC-IC ICTAS

Location
Riyadh, KSA

Area:
38,000 m²





Mumbai Airport
CSIA - TERMINAL 2



Complete classing work for arrival and departure zones. Finish work with respect to gypsum, flooring, tresspa cladding, binnacles and corian works. Duty Free fitout furniture finished complete onsite and offsite. Complete MEP service done at site with installation of fixtures.

Employer
GVK & DEPA
Location
Mumbai, India



New Delhi Airport
INDIRA GANDHI INTERNATIONAL AIRPORT
DOMESTIC TERMINAL - 1D



65000 sqft area completed with respect to dismantling MEP, and finishes work within a timelines of 4 months.

Employer
GMR
Location
New Delhi
Area:
6500 m²



INFRASTRUCTURE PROJECTS



MALLS & RETAILS

Al Faisaliah Mall, Riyadh



Mall

AL FAISALIAH REDEVELOPMENT MALL



The Kingdom's first skyscraper, Al Falsallah Tower has pioneered the architectural revolution for In novatlve, highrise buildings nationwide. Al Faisaliah Tower is a major tourist attraction in Riyadh and the headquarters for various multinational companies. Unit7 participated in the complete ceiling works for the public area, Fit-out, gypsum and plastering were also part of the scope.

Employer

Al Khozama

Design Consultant

Gensler

Eng Consultant

Arcadis

Main Contractor

Salini, SSA

Location

Riyadh, KSA

Area:

25,000 m²





LEISURE / CULTURAL SPACES



PAVILIONS

Children's Gallery
Spain Pavilion
Belarus Pavilion
Casa Augusta
Monaco Pavilion



Pavilion

SUSTAINABILITY PAVILION - CHILDRENS GALLERY



The project's scope of work involves the construction of a series of satellite dish-shaped structures located at Dubai Exhibition City, Dubai World Central, Dubai. The pavilion will also highlight the often overlooked world of plant and animal life found in the desert environment of the United Arab Emirates. The pavilion is one of three at the expo, presenting the opportunity to deliver an aspirational message about the natural world, ecology and technology to a global audience .Unit7 executed a design and development project using various elements in accordance to sustainability, customized Fit-out work was the main scope for us where majority of the item were fabricated at our in-house factory.

Employer
Expo 2020 Bureau

Design Consultant
Grimshaw Architects

Main Contractor
Acciona Cultural Engineering

Location
Dubai, UAE

Area:
500m²





Pavilion SPAIN PAVILION



The project's scope of work consist of a pavilion located at Expo 2020, Dubai South. The project includes an exhibition centre, outdoor spaces, infrastructure works and other associated facilities. The pavilion gives prominence to a large square covered by a series of conical volumes that have a climatic function to temper the public space. The square offers a series of domes covered with various materials that make reference to the most traditional insulation techniques in combination with innovative solutions. Unit7 executed all the civil works as well as metal ramps and the structure for gabion walls outside the pavilion.

Employer
Expo 2020

Design Consultant
Amann Canovas Maruri

Eng Consultant
Wanders Werner Falasi

Main Contractor
Cimolai Rimond

Location
Dubai, UAE

Area:
6,000 m²





Pavilion BELARUS PAVILION



The project's scope of work involves the construction of Belarus pavilion located at Opportunity Thematic District, Expo 2020, Dubai. the pavilion communicate the idea that "trees in a forest grow stronger and live longer when they stand together". Belarus will expand the idea to showcase that "anything is possible when minds connect in the same way". All the civil works for the pavilion were executed by Unit7 including flooring, ceiling and partitions.

Employer
Expo 2020 Bureau

Design Consultant
Kling Consult

Eng Consultant
Nature Restoration Landscape Design
Masterplanning Ecological Management

Main Contractor
Nussli Adunic

Location
Dubai, UAE

Area:
1,200m²





Pavilion CASA AGUSTA



Unit7 is participating in the development of the helicopter terminal building, also known as Casa-Agusta. Located inside Expo this pavilion will consist of a helipad, showroom and a lounge area. The purpose is to portray the development of a network point to point connections for urban and connections between cities. Our scope of work compiles of many elements with respect to interior fit-out, as well as the customized exterior circular glass façade.

Employer
Expo 2020

Design Consultant
Archea Associati

Main Contractor
Cimolai Rimond

Location
Dubai, UAE

Area:
2,000 m²



Pavilion MONACO PAVILION



The project's scope of work consist of a 2-storey pavilion located at Opportunity District, Expo 2020, Dubai. Inspired by the 'Rock of Monaco', this gem-like, polygonal pavilion will take visitors on a multi-sensory journey through mirrored exhibition spaces, replicating the sights and smells of the French Riviera. The structure features two main exhibition areas. The project also includes a two-storey exhibition hall, outdoor spaces, commercial space, parking facilities and infrastructure works. All the civil works were executed by Unit7 including flooring, ceiling and partitions.

Employer
Expo 2020 Bureau

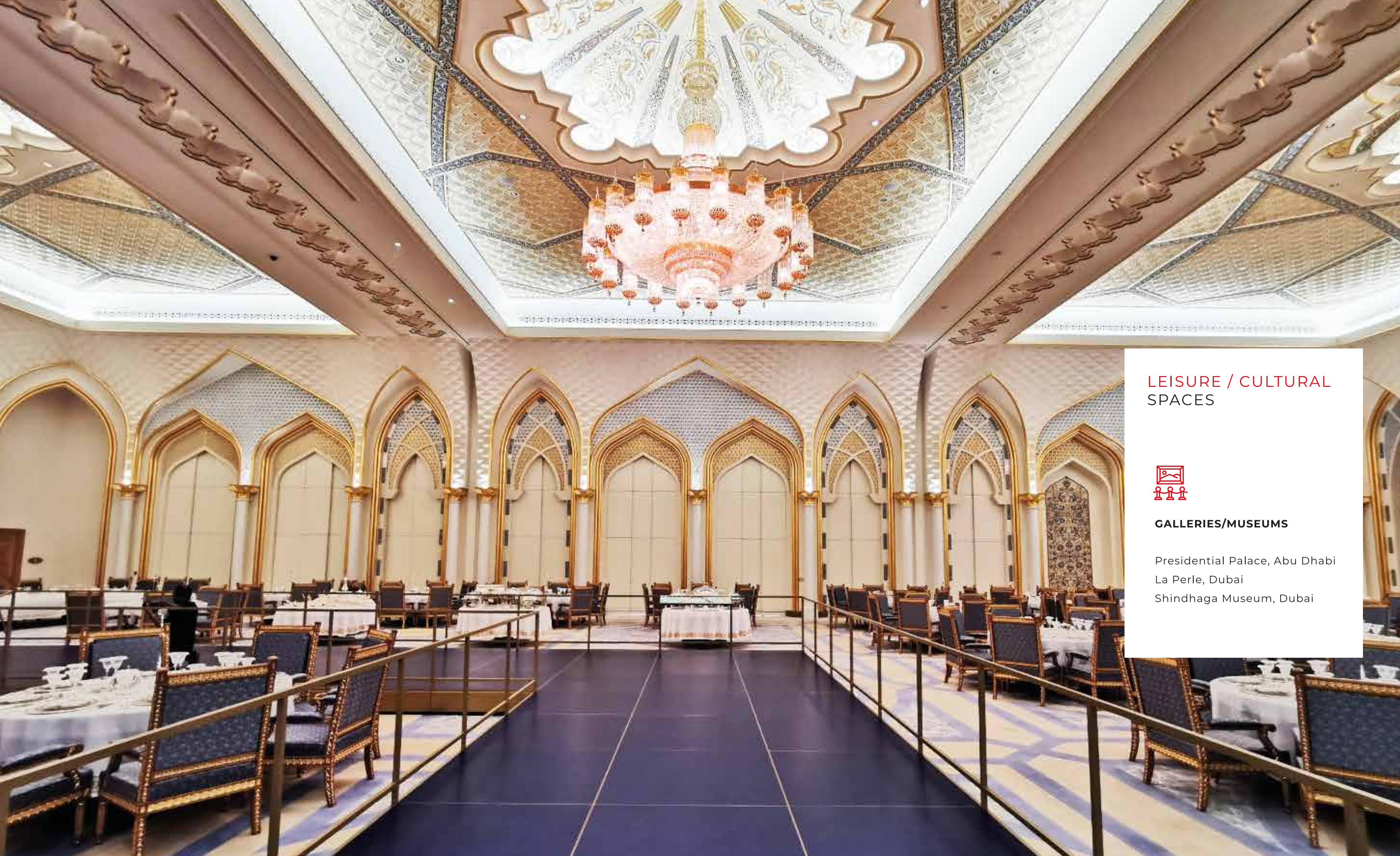
Design Consultant
Kling Consult

Eng Consultant
Nature Restoration Landscape Design
Masterplanning Ecological Management

Main Contractor
Nussli Adunic

Location
Dubai, UAE

Area:
1,770m²



LEISURE / CULTURAL SPACES



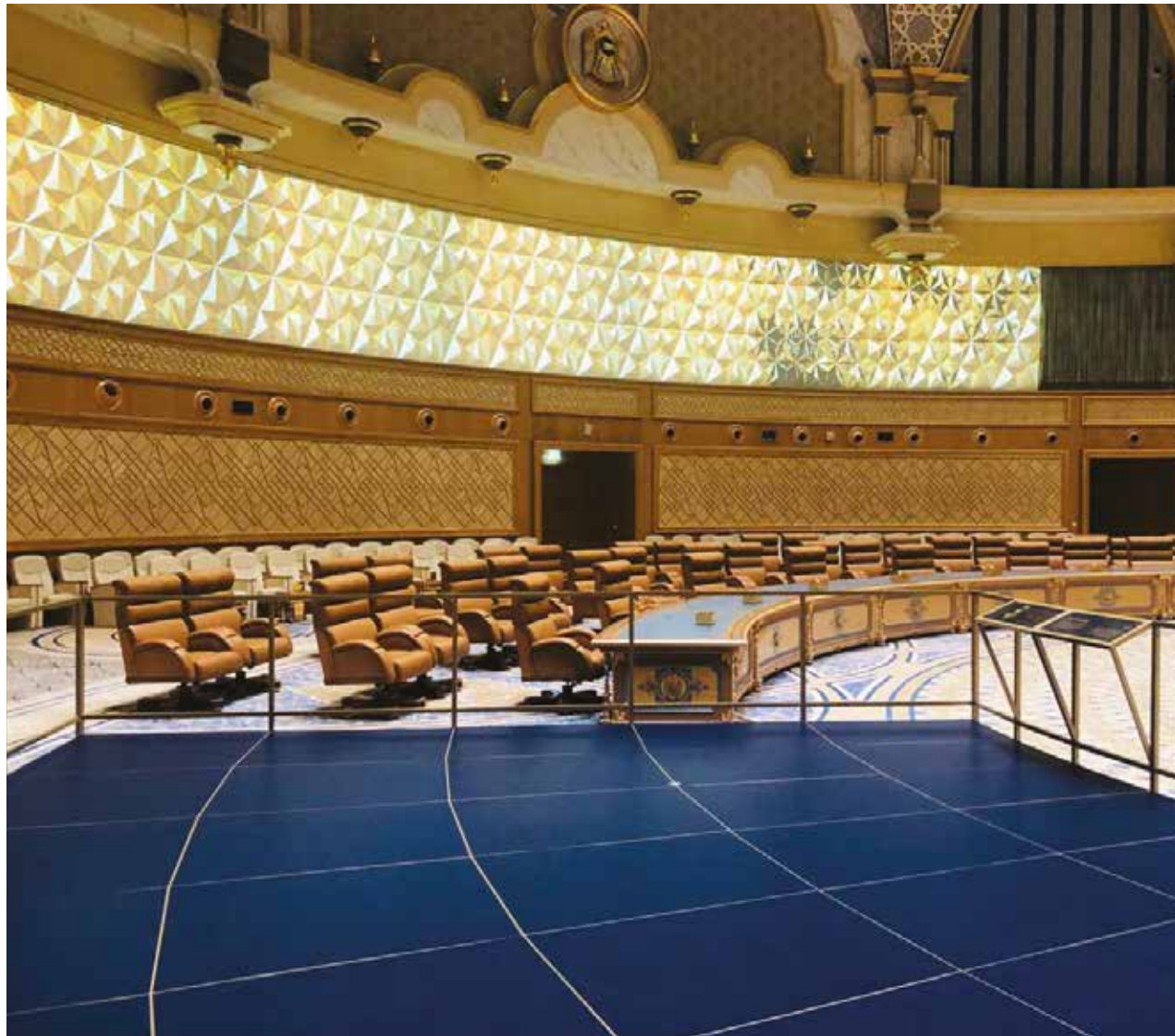
GALLERIES/MUSEUMS

Presidential Palace, Abu Dhabi
La Perle, Dubai
Shindhaga Museum, Dubai



Galleries/Museums

PRESIDENTIAL PALACE



Qasr Al Watan is more than a palace, it is a unique testament to the spirit of the United Arab Emirates' people and its leaders. The Palace invites the world to share our culture, knowledge and inspiring journey. The work has included construction of four large six-metre cubes located in the main hall of the building, which offer different visions of the hall from their inside, as well as the graphic elements installation work, the audiovisual equipment, installation of the display cases and arrangement of the pieces of the collection.

Employer

Miral, representing the Crown Prince Court

Main Contractor

Acciona Cultural Engineering

Location

Abu Dhabi, UAE

Area:

12,000m²





Galleries/Museums
LA PERLE



La Perle was created and produced by world renowned Artistic Director, Franco Dragone. Internationally recognised for reinventing the genre of theatre and changing the face of live entertainment in Las Vegas. Some of his most celebrated shows in the last decade include Celine Dion- A New Day, Le Rêve (Las Vegas) and The House of Dancing Water (Macau). Unit7 worked along with Dragone with the production of customized unites for the public area.

Employer
Al Habtoor Group

Design Consultant
Dragone

Eng Consultant
Khatib & Alami

Main Contractor
Al Habtoor Group

Location
Dubai, UAE

Area:
1,400m²



Galleries/Museums
SHINDHAGA MUSEUM



The project's scope of work involves the development of Al Shindagha Museum project located in Shindagha, Dubai. The Shindagha Museum project is divided into several stages, or 'waves', corresponding to different theme pavilions made up of clustered historic houses that showcase Dubai's history and culture. The restoration plan also includes a series of key buildings, museums, mosques, a tourism office, hotels, and restaurants. The project's scope of work involves the development of Al Shindagha Museum project located in Shindagha, Dubai. This project is divided into several stages, or 'waves', corresponding to different theme pavilions made up of clustered historic houses that showcase Dubai's history and culture. Unit7 worked along with Acciona to execute the Fit-out & Civil works.

Employer
Dubai Culture & Arts Authority

Design Consultant
Lord Cultural Resources

Main Contractor
Acciona Cultural Engineering

Location
Dubai, UAE

Area:
5,500m²



LEISURE / CULTURAL SPACES



HOSPITALITY

The Royal Atlantis, Dubai
Andaz Hotel by Hyatt, New Delhi
Shangri La, New Delhi



Hospitality / Hotels
THE ROYAL ATLANTIS



The project's scope of work consists of a hotel and residential two-tower complex located at Palm Island, Dubai. The hotel and residences towers are connected by a 45 meters long sky bridge. Each tower consists of 3 reinforced concrete sub towers. The project includes full terraces, private pools, and shaded gardens.

Employer
Atlantis The Palm

Design Consultant
KPF

Eng Consultant
Parsons Brinkerhoff

Main Contractor
AHK

Location
Dubai, UAE

Area:
3000m²





Hospitality / Hotels

ANDAZ HOTEL BY HYATT, NEW DELHI



Each guestroom is thoughtfully designed and decorated with locally inspired details, our expert team In Unit7 consisting of creative designers, were working alongside highly experienced craftsman to deliver what is now a 5* hotel in Delhi. Months of coordination and planning with the client, resulted in a sophisticated hotel which pays attention to detail. Unit7 worked in various areas within the hotel which included the public area, guest room and restaurants.

Employer
Hyatt

Location
New Delhi

Area:
6000m²



Hospitality / Hotels

SHANGRI-LA, NEW DELHI



Unit7 helped execute the overall interior fitout works for the Shangrila hotel project situated in New Delhi, the scope of work consisted of High-end FF&E works, multiple metal elements were used in the execution of this project. An integrated team of experts with architectural know how along with specialist engineers were hired to overcome the challenges, in the end delivering a project with high standard and completing the milestone provided by the client.

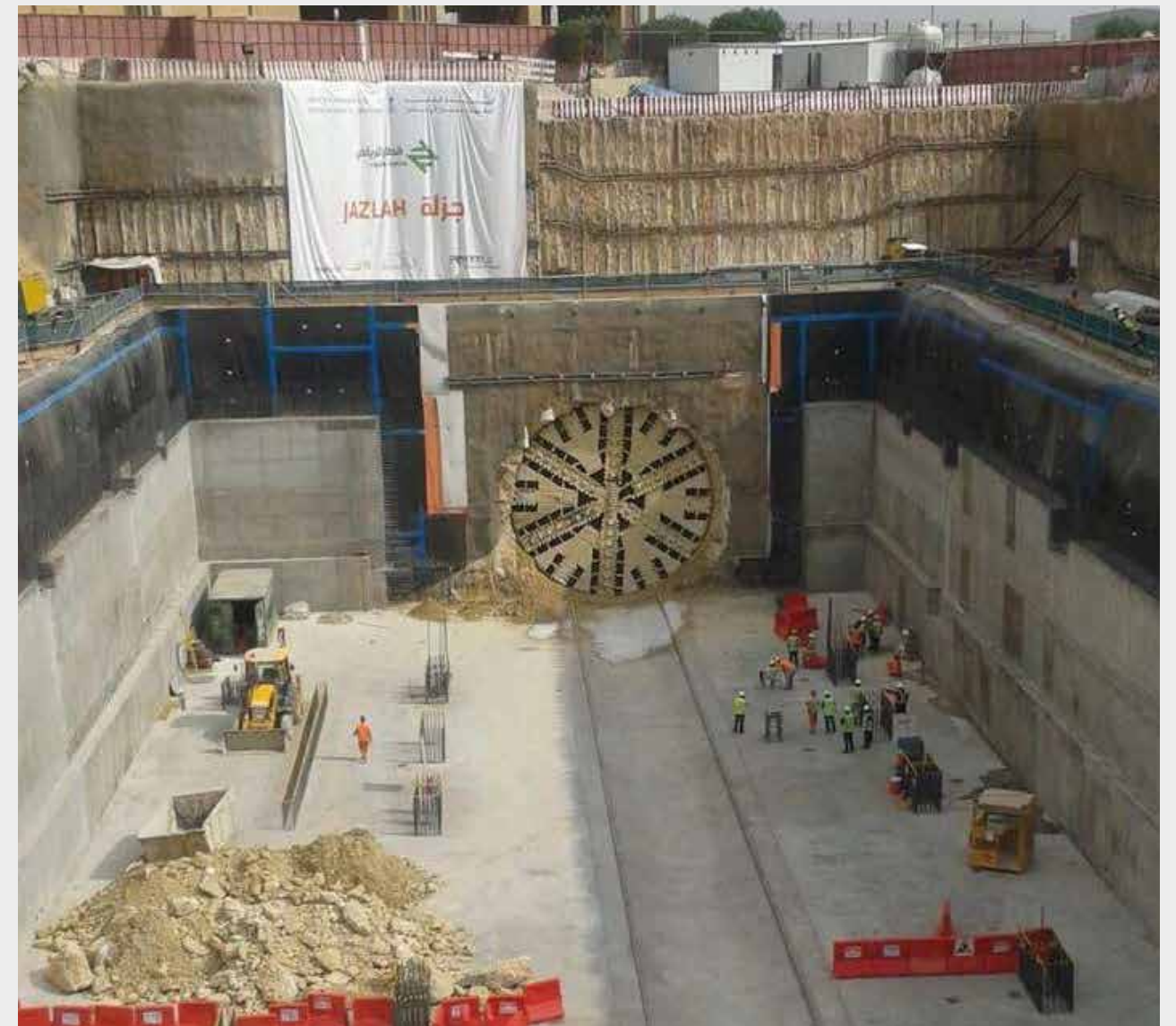
Location
New Delhi

Area:
5000m²



Unit7 and Zenith have partnered together on prestigious projects solely focusing on infrastructure. A strong healthy relationship has been established between the two companies, where the goal has always been on quality and efficiency.

Jointly we have done the execution of projects such as malls and metro's to name a few. The two companies combine the efforts of a highly skilled workforce, along with strategic planning and innovative use of technology to achieve complex challenges. We form a multi-services company which mainly operates in the construction of commercial and residential buildings and infrastructure.



GROUP OF COMPANIES

In line with operating as a main contractor, UNIT7 has additional capabilities which complement our core activities and provide additional offerings to our clients.



UNIT7 GROUP the umbrella company specializes in the construction & fit-out works for infrastructure, galleria, airports, hospitality all across KSA, UAE, India, Canada and U.K.



UNIT7 MEP SERVICES are specialists in Mechanical, Electrical and Plumbing (MEP). We provide the expertise, experience and resources that are essential to meet the demands of today's fast track projects.



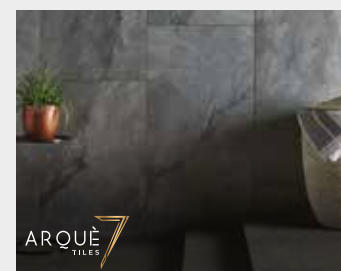
ZENITH Enterprises, an associate subcontractor we mobilise for strategic projects, mainly metro civil works. For on-site prefabrication and large scale construction works.

Our Associates

Soundlines, Ram Metal, Archigama, Sunshine Metal, Alamco



Misto Vareni is one of the first few companies to pioneer the concept of comprehensive Luxury Kitchens. We take pride in designing and fabricating impeccable customized Stainless Steel Modular Kitchens.



Arque7 provides architectural solutions for internal and external finishes. Our tiles integrate technological expertise with exquisite designs. Each tile is crafted using ultra-modern technology to ensure high quality.



Woven7 manufacture Rugs and Carpets, based out of London & New York. We deliver bespoke tailor made products for retail, galleries, hospitality, theaters, and luxury residences. Woven7 boasts wide array of celebrities & royal family clientele.

SUSTAINABILITY POLICY

Sustainable construction has a plethora of benefits in every stage of a construction project. Improved health due to safer materials, increased productivity thanks to better surroundings and more effective noise protection are only a few of the advantages. Green buildings can improve life quality.

Unit7 Group is committed to promoting sustainability and understands the range of impacts construction and associated site activities has on communities. It is the policy of Unit7 Group and all Sub-Contractors / Suppliers appointed to undertake works & supply products / materials, to protect the environment through sound practices that reduce waste generation, minimise risk to the environment and preserve energy. We aim to follow and to promote good sustainability practice, to reduce the environmental impacts of all our activities and to help our clients and partners to do the same.

We will undertake all construction and refurbishment activities in line with the following Targets:

- Reuse and recycle resources on site, through sustainable management of materials, to reduce and ultimately eliminate waste in construction
- Re-use existing built assets and construct new, long lasting, energy conscious and future proof (adaptable and flexible) buildings and structures which are easy to maintain, operate and deconstruct
- Minimise carbon emissions during construction
- Increase the use of energy efficient solutions in design and material resources, while considering the whole life costs, to reduce environmental impacts from the use of energy, resources and hazardous substances
- Minimise and conserve natural resources such as stone, timber and other materials and Proactively create, manage and enhance wildlife habitats and natural landscapes
- Contribute to social and economic regeneration by employing and nurturing a committed, skilled and adaptable workforce, working in an environment of zero accidents and incidents with appropriate arrangements for education and training, employment, health and safety

WELFARE POLICY

This policy statement sets the direction of UNIT7 by communicating its management values, beliefs and commitment to the welfare of its people. We are committed to do all that is reasonably practicable to ensure the welfare of its employees, contractors, members of the general public and those who may be affected by its activities.

We are committed to continually improving our worker welfare policy for the betterment of everyone associated with us. Unit7 Group firmly believes that dignified living and working conditions and social and economic well-being of the employees are essential to unlocking human potential. These factors are essential to Unit7's mission of raising the quality of life for their workers. Our Policy ensures that employment harmony is maintained across all operations of Unit7 . This also applies when engaging JV and Sub Contractor personnel. It is the responsibility of Unit7 to ensure that all applicable local Laws and regulations are adhered to and we are committed to :

- Prohibition against all forms of illegal discrimination, and provide equal and fair treatment to all employees on the basis of merit
- Promoting a just, fair and harassment free work place to all
- Eliminate all elements of victimization
- Maintain open communication channels
- Continue to be an employer of choice
- Create safe and healthy working environment for all

Worker Welfare Policy focuses on retaining and further developing the human capital under the motto & Building on People. This Policy applies to all those who are directly controlled by Unit7 Group and its activities.



CORPORATE SOCIAL RESPONSIBILITY

We, at Unit7 Group, take initiative to contribute to the harmonious and sustainable development of society and the earth through all business activities that we carry out in each country and region, based on our Guiding Principles. We comply with local, national, and international laws and regulations as well as the spirit thereof, and conduct our business operations with honesty and integrity. In order to contribute to sustainable development, we believe that management interacting with its stakeholders as described below is of considerable importance, and we will endeavor to build and maintain sound relationships with our stakeholders through open and fair communication. We expect our business partners to support this initiative and act in accordance with it.

The CSR policy is an adaptation of the Guiding Principles at Unit7 and brings in focus our relationships with employees. In order to contribute to sustainable development, we believe it is essential that management fosters strong communication with all members.

Our Corporate Social Responsibility (CSR) policy refers to our responsibility toward our environment. It is part of a bigger system of people, values, other organizations and nature. The social responsibility of a business is to give back to the world just as it gives to us.

We respect our employees and believe that the success of our business is led by each individual's creativity and solid teamwork. We support personal growth for our employees. We strive to provide fair working conditions and to maintain a safe and healthy working environment for all our employees. Through communication and dialogue with our employees, we build and share the value & Mutual Trust and Mutual Responsibility, & working together for the success of our employees and the company. We recognize our employee's right to freely associate, or not to associate, complying with the laws of the countries and regions in which we operate.

Management of each company takes leadership in fostering a corporate culture and implementing policies that promote ethical behavior. We implement our philosophy of respect for people by honoring the culture, customs, history, and laws of each country and region.

We constantly pursue safer, cleaner, and improved technologies that satisfy the evolving needs of society for sustainable mobility. We do not tolerate bribery of or by any business partner, government agency, or public authority, and maintain honest and fair relationships with government agencies and public authorities.

UAE

DUBAI
UNIT7 INTERIORS LLC,
Ibri House,
Office no : 108/109, 1st floor,
Al Quoz Industrial Area 1,
Opp. Noor Bank Metro Station,
Dubai - UAE.

Tel: +971 4392 1299

KSA

RIYADH
Unit7 CONTRACTING EST.,
Al Zein Tower,
Office No. 26, 5th Floor,
Salahuddin Ayoubi Street,
Al Malaz, Riyadh,
Kingdom of Saudi Arabia.

Tel: +966-112786573

UK

LONDON
36 Alie St, Whitechapel,
London
United Kingdom
E1 8DA,

INDIA

MUMBAI
UNIT7 INTERIORS PVT. LTD.
2nd and 3rd Floor,
Waziri Manzil, Modi Street,
Opp. GPO, CST, Fort,
Mumbai - 400 001, INDIA.

CANADA

1468 Midland Ave
Toronto, Ontario
Canada M1P 3B9
Tel : 416-834-7927



BUILDING EXCELLENCE
TO SUPPORT GROWTH
AND BETTERMENT.

